

Series 23

The lock range for timber and steel doors in well-proved quality for versatile applications. Coming in a large number of product variants,

the programme for one wing and double wing door systems meets the sophisticated demands of project.

Latch
provides a durable closure of the door.

Forend
as fixing element of the lock with the door. The various design scopes of surfaces and shapes must be specified in the order.

Panic functions
available as function B, function C, function D and function E.

Deadbolt
with advancing return spring.

Lock case
fully enclosed to protect the functioning of the lock.

Follower
made of steel, panic functions B, C + D in 2-part version.

Fixing hole for door furniture
provides for a solid through fixing of the door furniture.

Locking method
available for profile cylinder or Swiss round cylinder.

Backset
available 65 + 80 + 100 mm.

Series 23 Top locking

Shoot bolt lock with E-opener

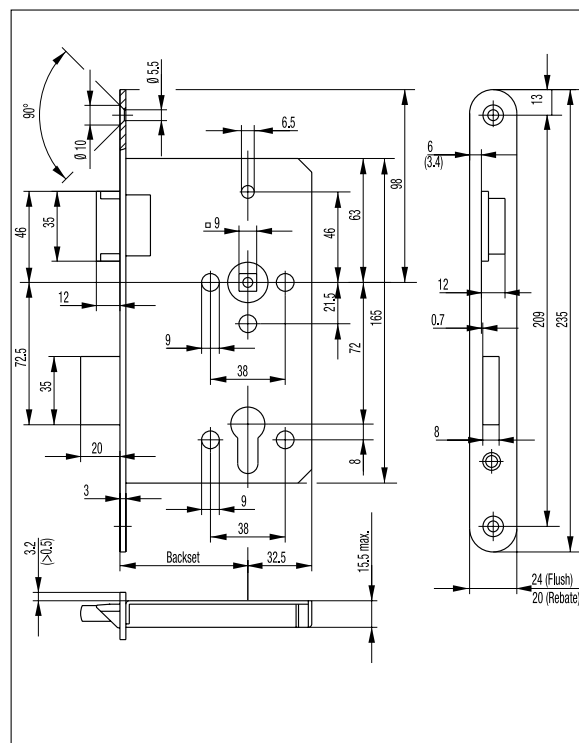
Shoot bolt lock

Design

Lock 2320



Dimensions



Specification

BKS mortise lock for fire rated doors according to DIN EN 1634 + DIN 4102 and in combination with BKS door furniture suitable for escape doors according to DIN EN 179 + DIN EN 1125.

Panik functions:

- panic function B
- panic function C
- panic function D
- panic function E

Door application:

- single or double door systems
- shootbolt locks, optional with E-opener
- partly with top locking in the active wing to DIN EN 179